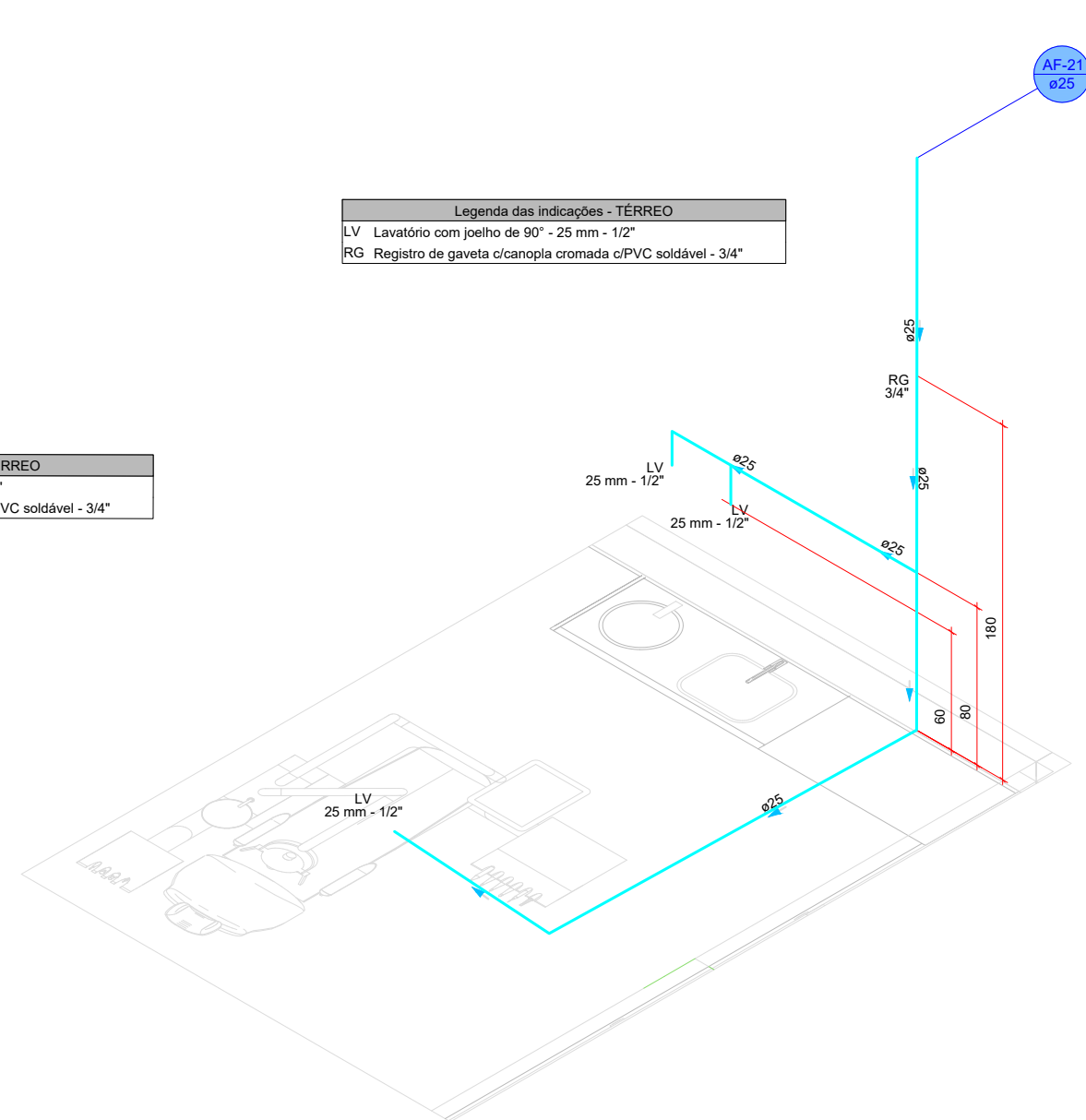
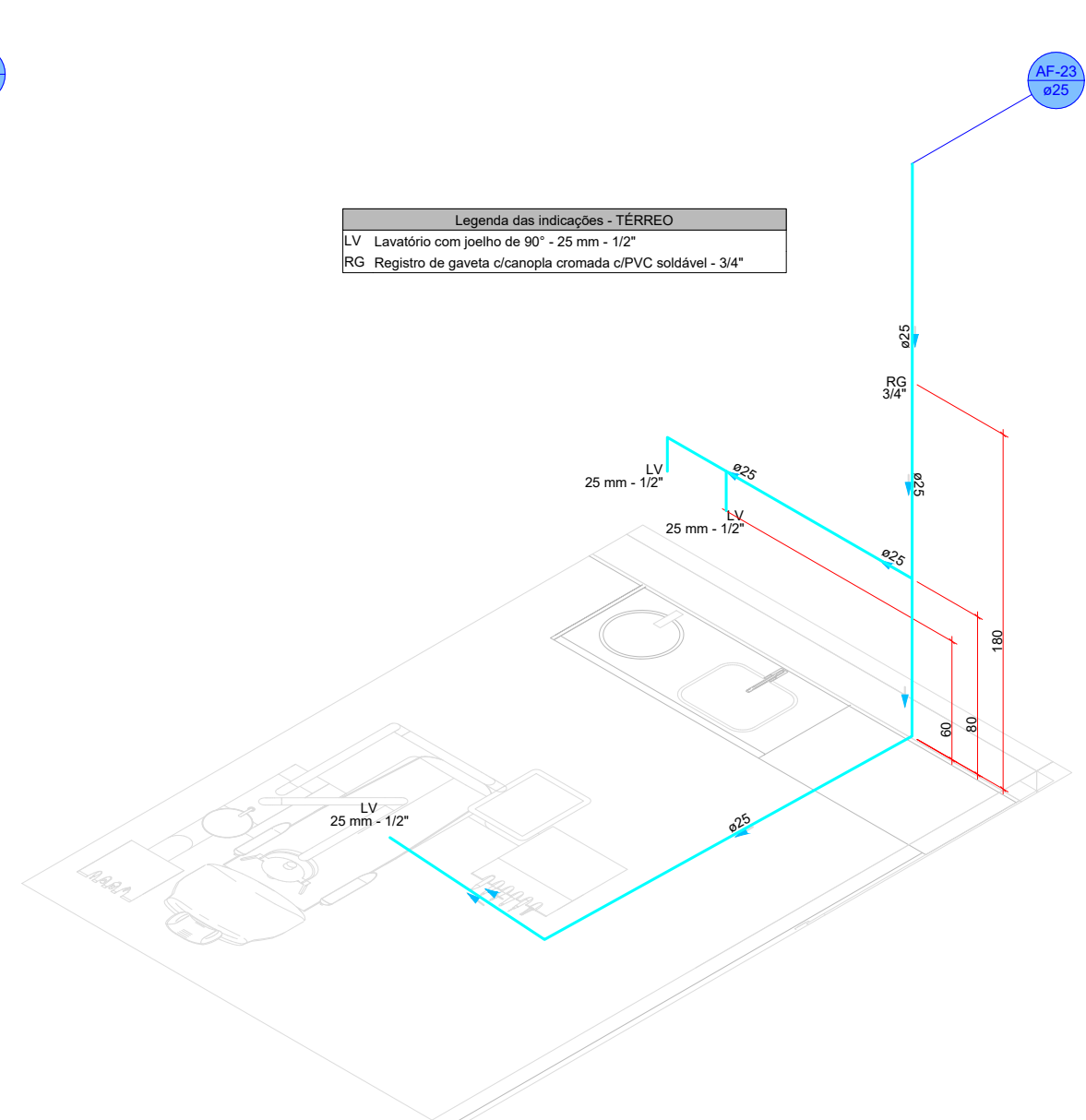


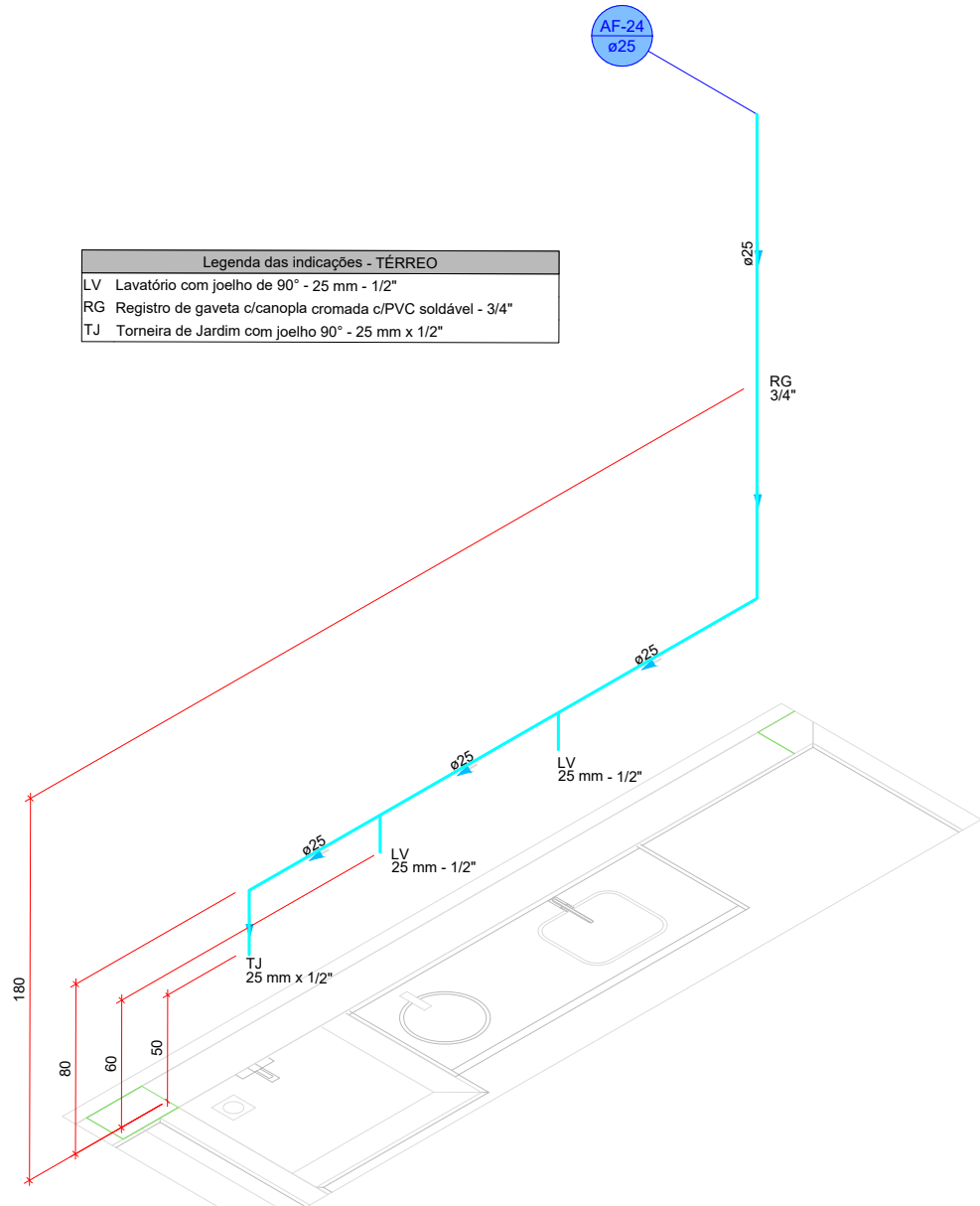
DETALHE HID-19
1:25



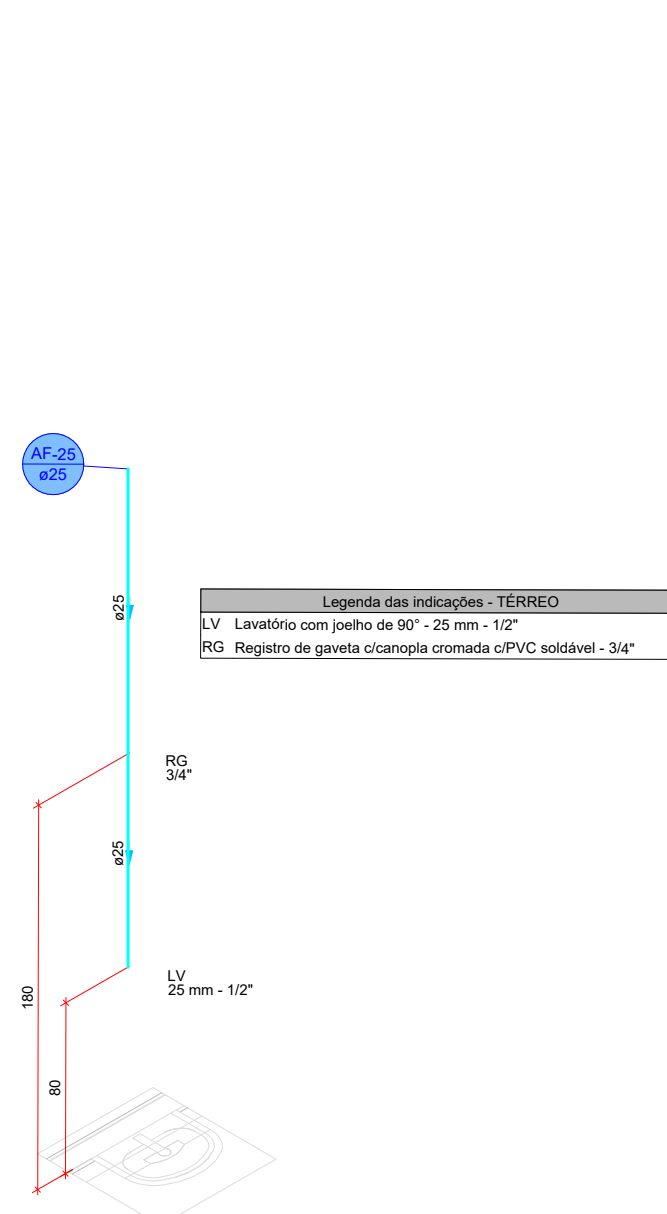
DETALHE HID-20
1:25



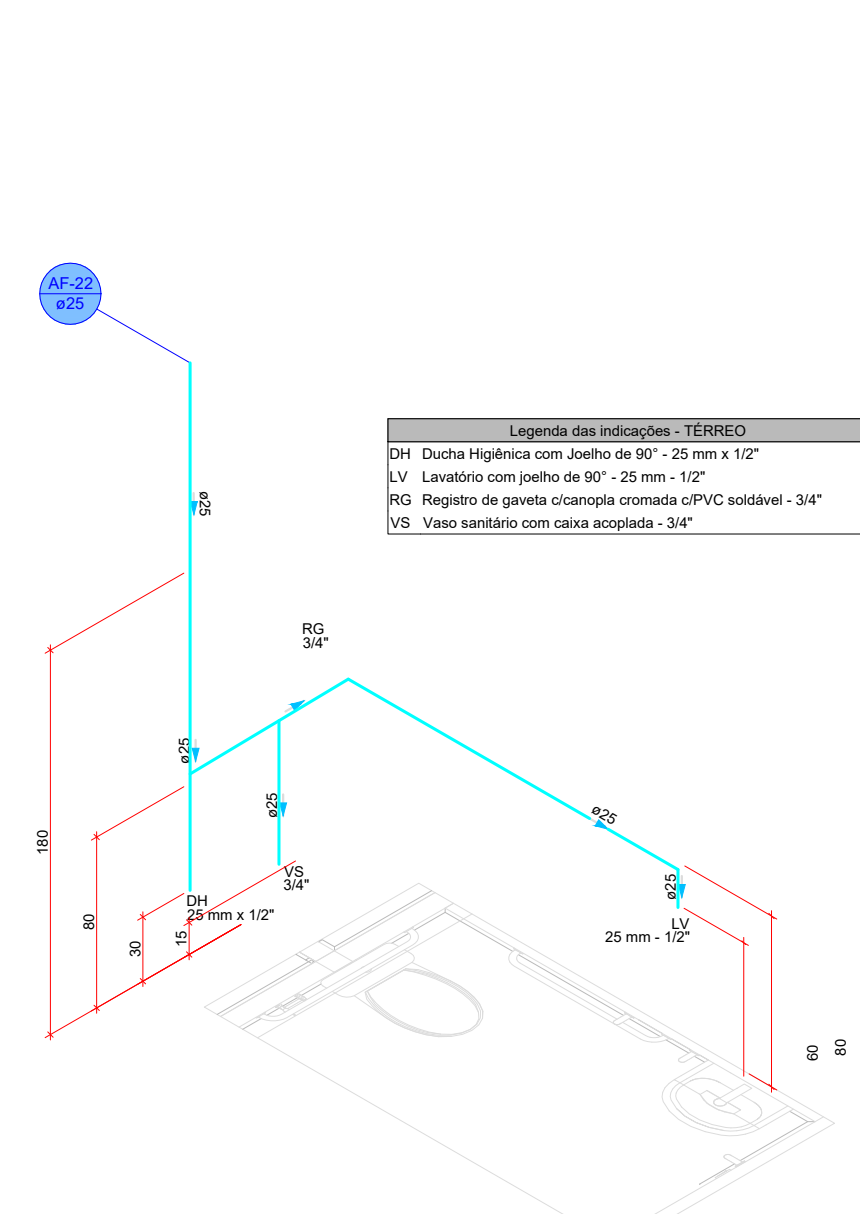
DETALHE HID-21
1:25



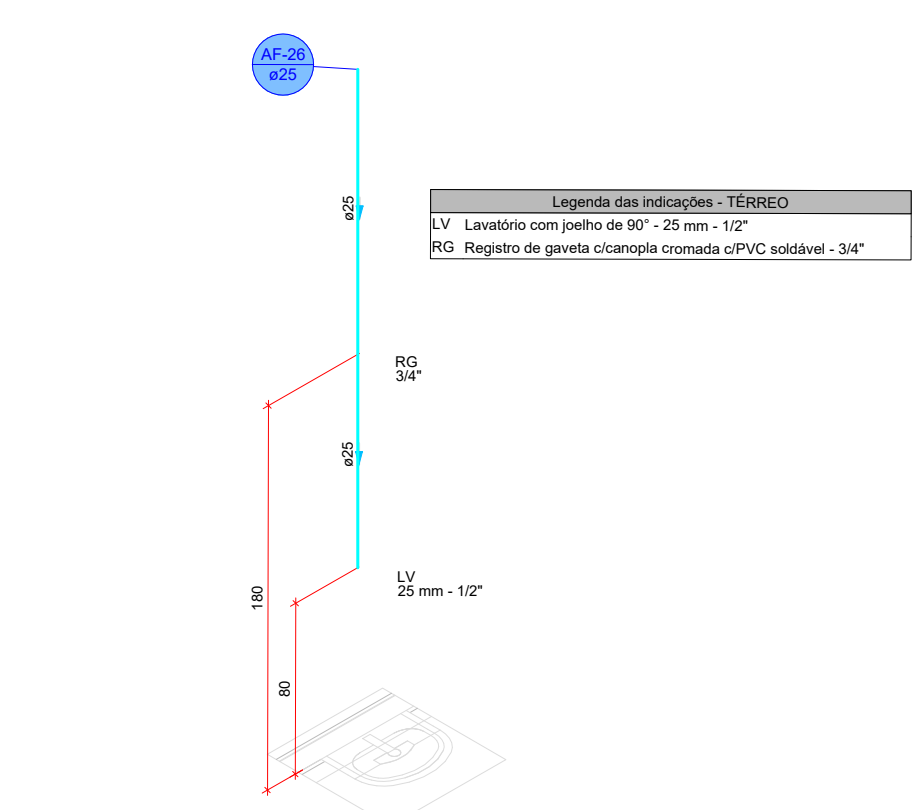
DETALHE HID-22
1:25



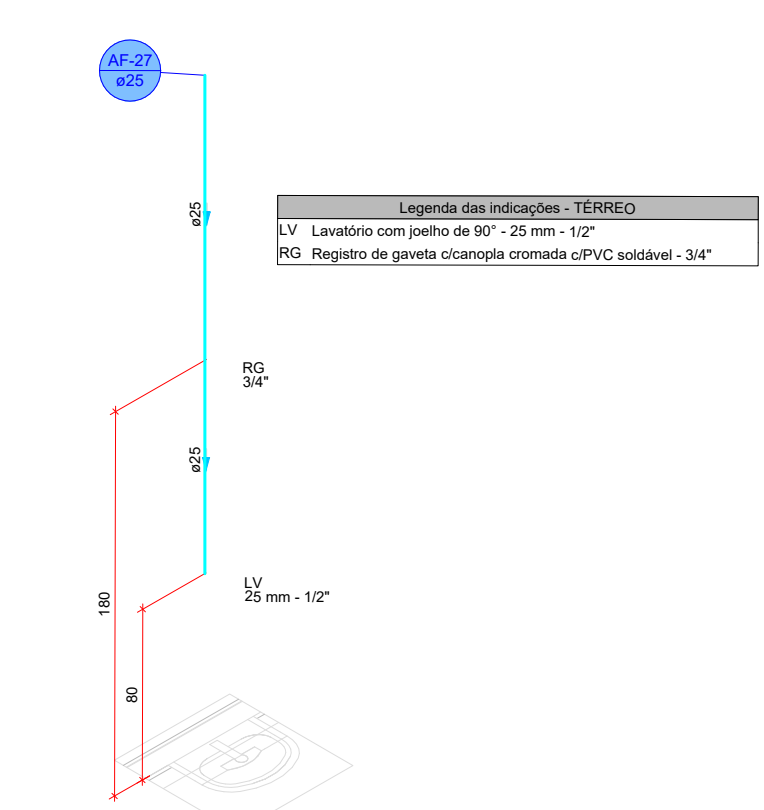
DETALHE HID-23
1:25



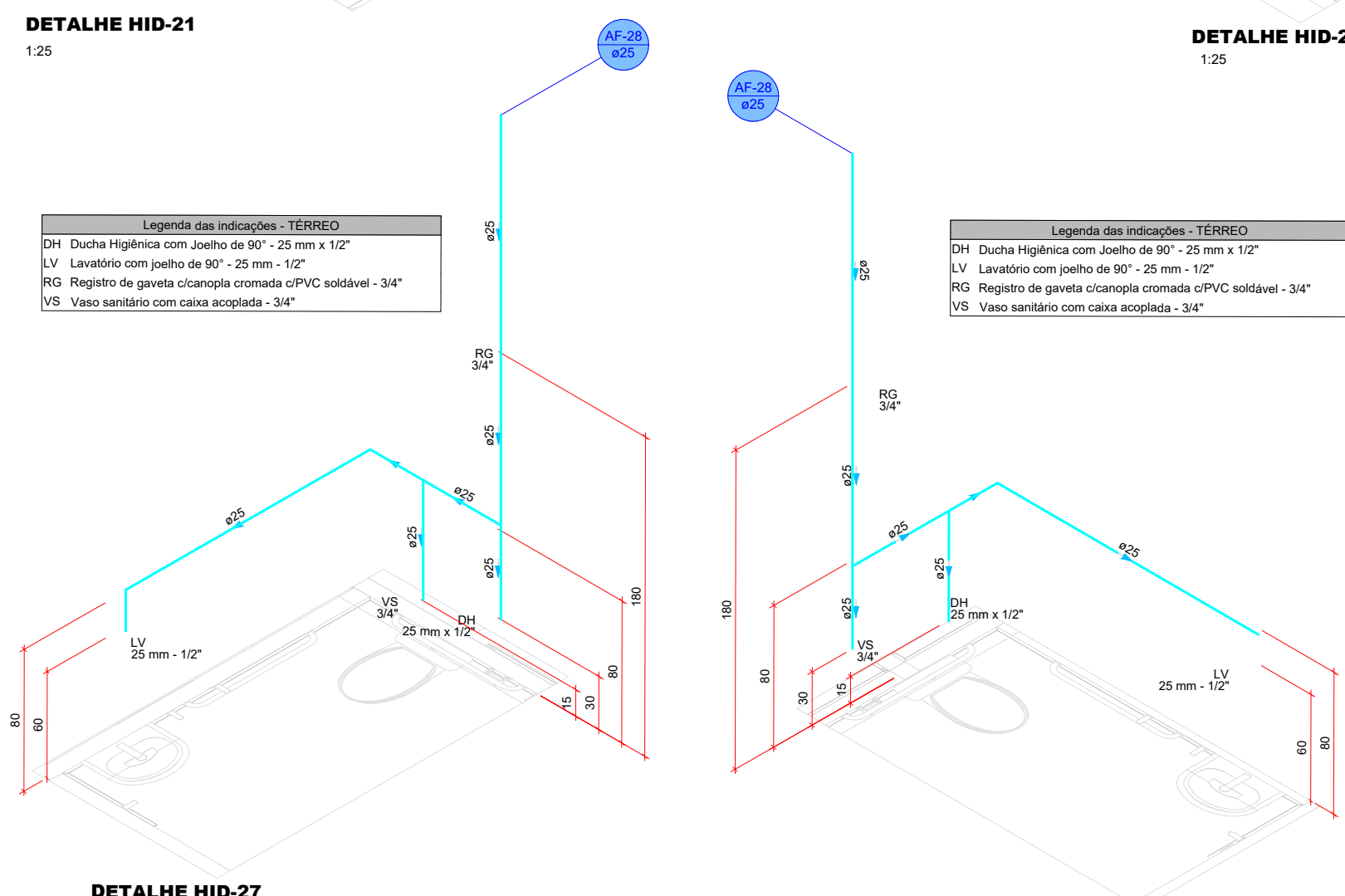
DETALHE HID-24
1:25



DETALHE HID-25
1:25

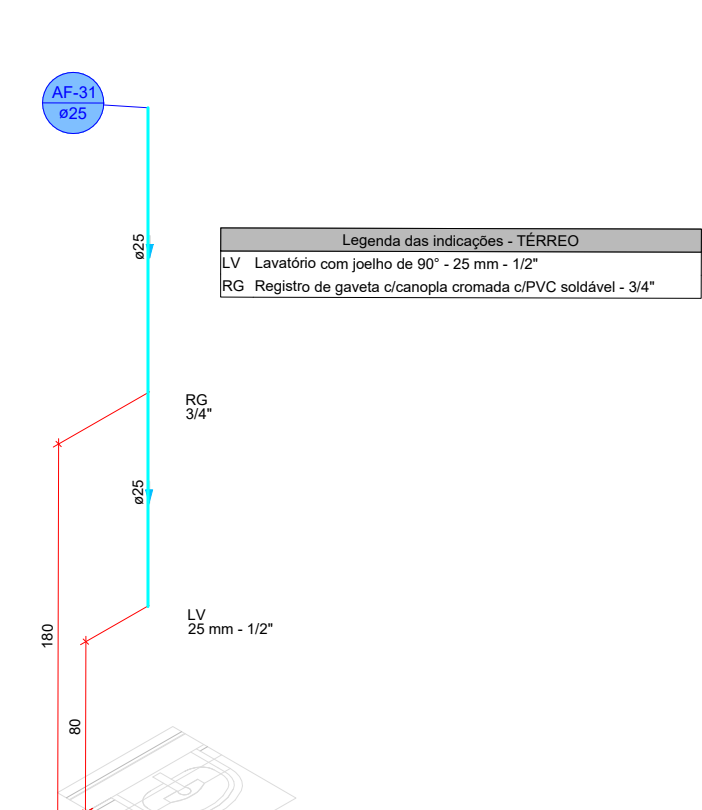


DETALHE HID-26
1:25

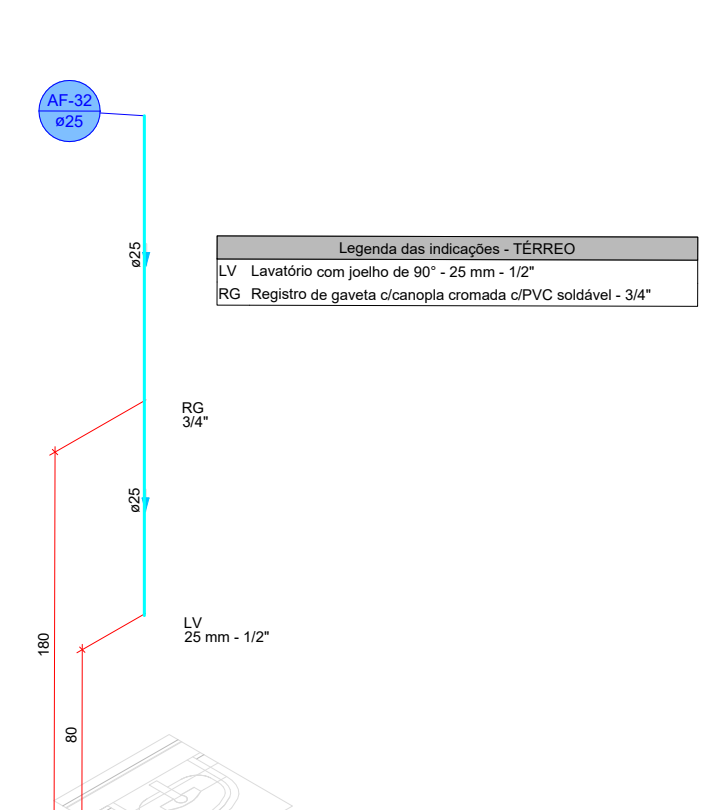


DETALHE HID-27
1:25

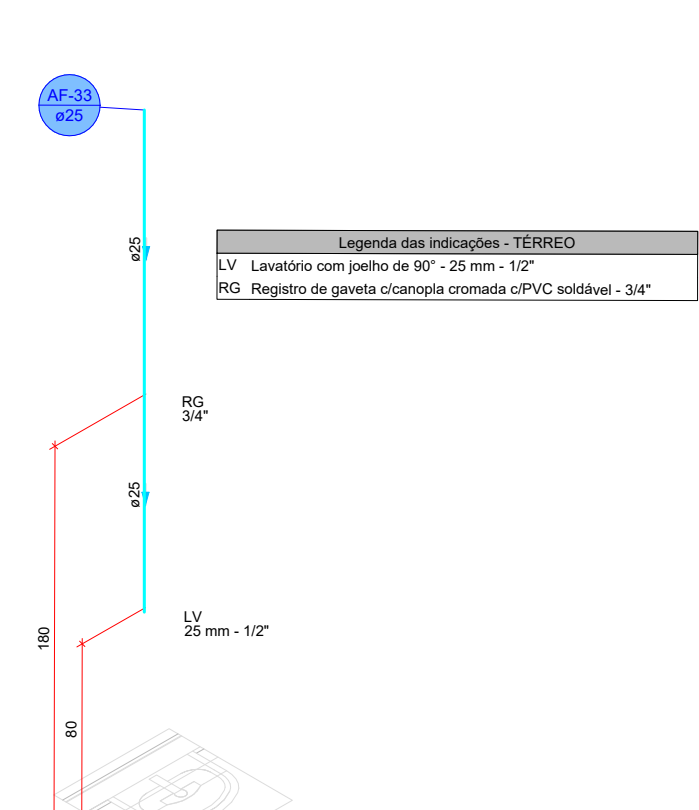
DETALHE HID-28
1:25



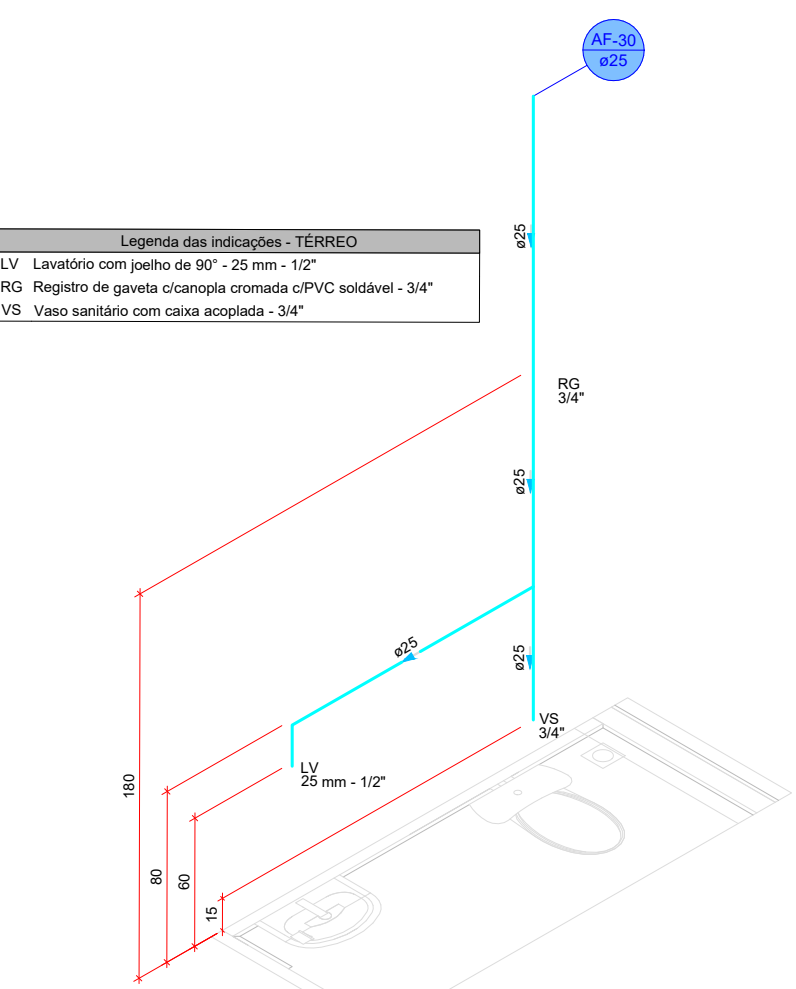
DETALHE HID-29
1:25



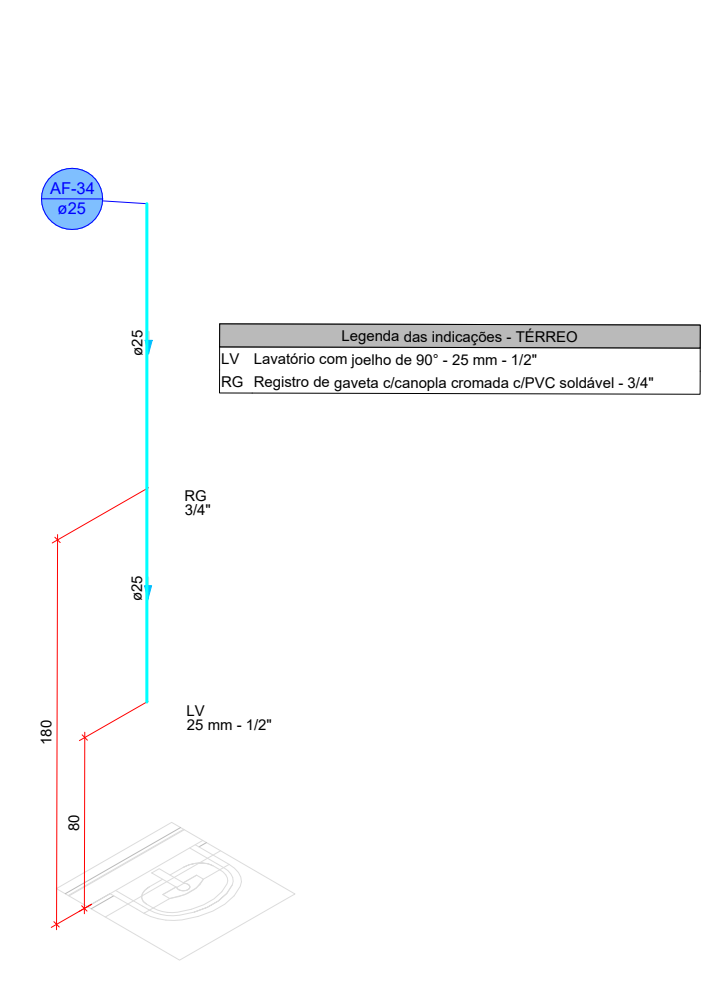
DETALHE HID-30
1:25



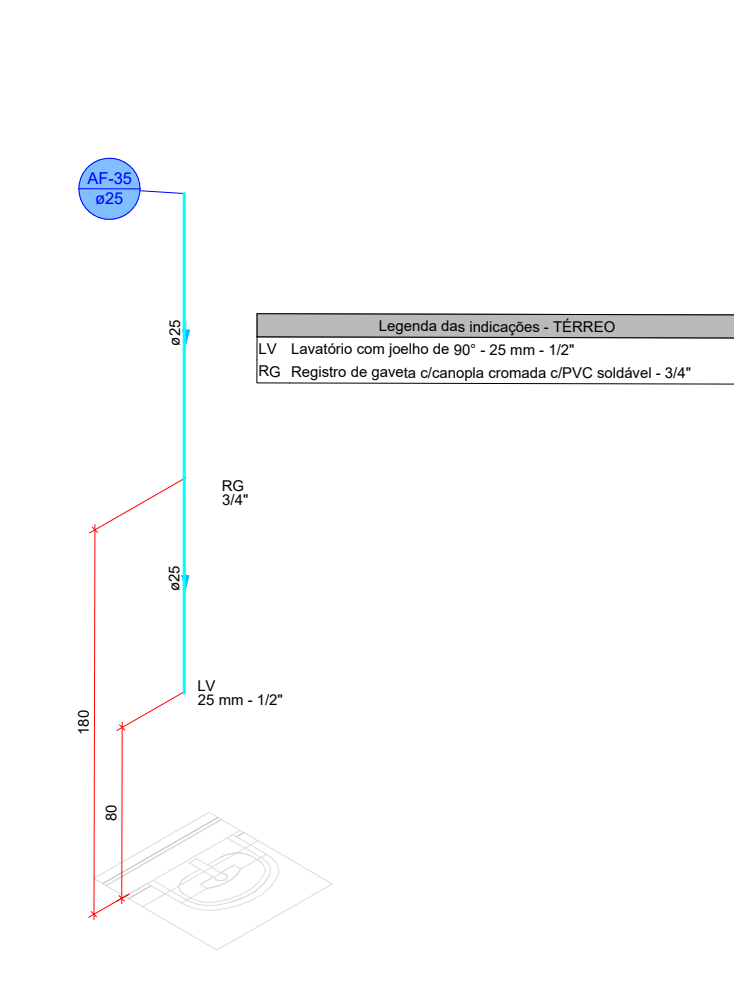
DETALHE HID-31
1:25



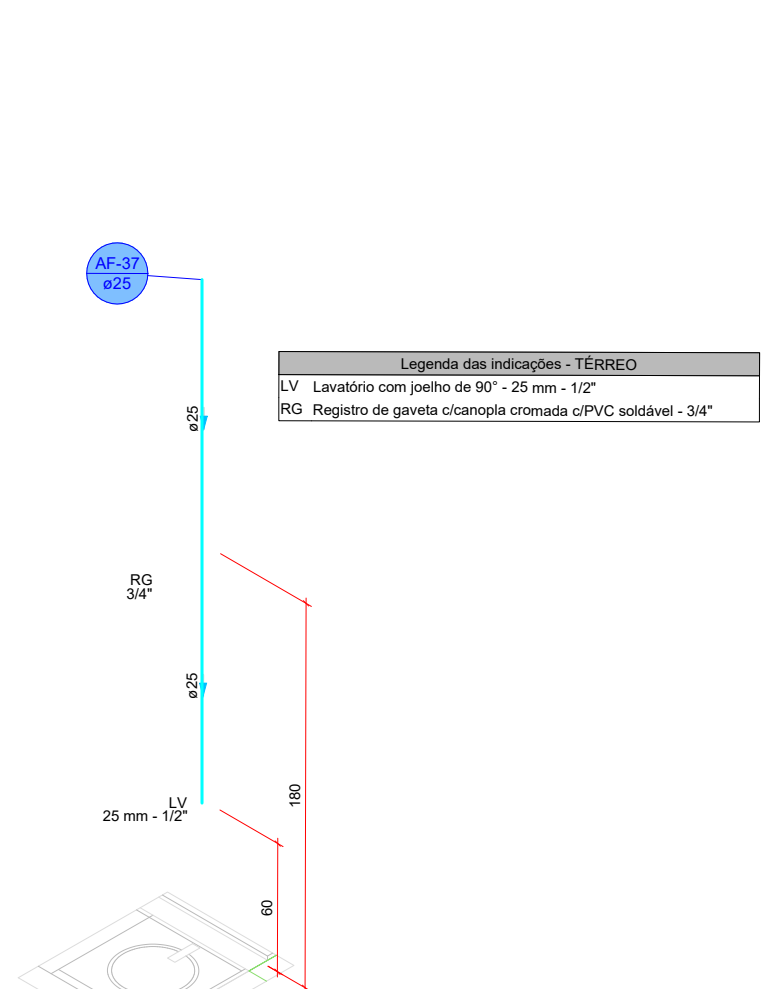
DETALHE HID-32
1:25



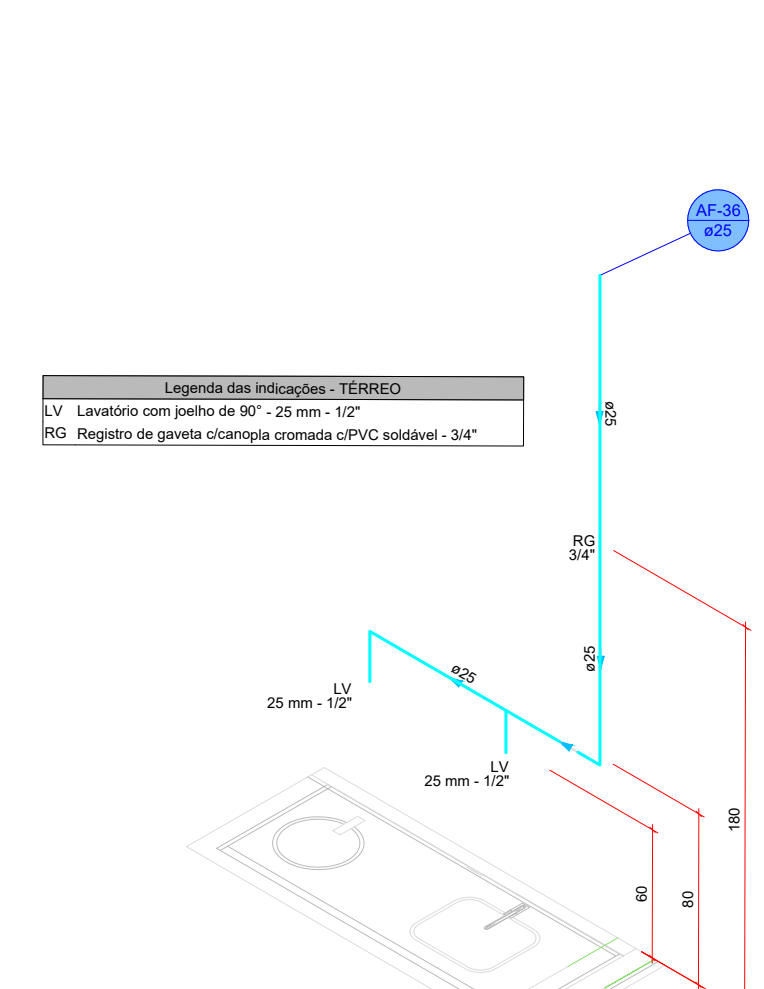
DETALHE HID-33
1:25



DETALHE HID-34
1:25



DETALHE HID-35
1:25



DETALHE HID-36
1:25

		MUNICÍPIO DE IJUÍ SECRETARIA MUNICIPAL DE SAÚDE RUA BENJAMIN CONSTANT, 429 - CENTRO - IJUÍ/RS - CEP:98700-000	
PREFEITO		ANDREI COSSETIN SCZMANSKI	
SECRETÁRIO MUNICIPAL SMS		MARCIO JUNIOR STRASSBURGER	
RESPONSÁVEL TÉCNICO		RICARDO HEISLER ENG. CIVIL CREA/RS 223388	
OBRA EXECUÇÃO DE UBS II			
ENDEREÇO Avenida 21 de Abril - Bairro Osvaldo Aranha			
PRANCHA		Nº 05 /06	
DETALHES HIDRÁULICOS, NOTAS E LEGENDAS.			
DATA ABRIL/2025	ESCALA INDICADA	ÁREA TOTAL 665,05 m²	DESENHO REVISÃO